

### Carlos Banchik, P.E.

Principal  
cbanchik@innovanv.com  
Mobile: (702) 429-0013

### Robert Naples, P.E.

Vice President  
rnaples@innovanv.com  
Telephone: (702) 220-6640



1432 South Jones Blvd., Las Vegas, NV 89146  
Tel: (702) 220-6640 | [www.innovanv.com](http://www.innovanv.com)  
[Linkedin.com/company/1344152](https://www.linkedin.com/company/1344152)



### Company Overview

Founded in 2003, Innova Technologies is a specialty structural engineering firm providing speed and technical competence to projects and companies in all 50 states and around the world. **Core competencies include post tension, steel fabrication, transportation engineering, construction engineering, validation engineering and complex structures.** With our experienced personnel, we provide to our clients reliable, timely, cost effective, and constructible solutions.

Teamwork and communication are essential to achieve optimum project outcome. Innova is comprised of exceptional team players that interface seamlessly and strategically collaborate to generate the best possible solutions for our clientele.

### Key Business Areas

#### Structural Engineering

- ◀ Commercial
- ◀ Industrial
- ◀ Residential
- ◀ Medical
- ◀ Hospitality
- ◀ Institutional

#### Services Offered

- Complete construction documents
- Post-tensioned structures
- Tenant improvements
- Seismic restraints for mechanical components
- Retaining walls
- Structural and mechanical verification
- Theming and industry design projects
- Seismic Evaluations
- Box culverts, drainage structures

#### Construction Engineering

- ◀ Logistics
- ◀ Aids and Rigging
- ◀ Erecting Sequencing
- ◀ Fabrication Drawings
- ◀ Planning Construction
- ◀ Cost Analysis

#### Services Offered

- Construction engineering support
- Fall protection
- Mechanical contractor support
- Software development
- Construction equipment and form design
- Structural design of mechanical equipment
- Civil engineering

#### Transportation Engineering

- ◀ Monorails
- ◀ Civil Engineering/Alignment
- ◀ Bridges
- ◀ Civil Structure System Interface
- ◀ Automatic People Movers
- ◀ Precast Construction

#### Services Offered

- Monorail Technology
- Alignment definition and optimization
- Precast and construction technology
- Project development
- Bridge design
- Rapid prototyping
- Structural analysis

### Corporate Snapshot

#### Certifications:

- ◀ Licensed in all 50 States
- ◀ DBE
- ◀ MBE
- ◀ SBE

**Duns:** 170393404

**CAGE Code:** 5H9S9

#### NAICS Codes:

- ◀ 541330, Engineering Services
- ◀ 541340, Drafting Services
- ◀ 541420, Industrial Design Services
- ◀ 541511, Custom Computer Programming Services

### Competitive Advantages

- ✓ Proactive project management
- ✓ Responsiveness and timeliness
- ✓ Creative processes
- ✓ Lower overall construction cost
- ✓ Strategic partnerships
- ✓ Multi-disciplinary knowledge
- ✓ Fabrication and Erection know-how

*Innovating Solutions For You*©



**Long Beach Civic Center** - Provided stair and associated rail design for the City Hall Building and the Library Building. **Steel Fabrication Support, Construction Engineering**



**University of Delaware Star Labs** - Provided the seismic analysis and equipment anchorage for a large, multi-story modular master plant located on the roof of the serviced structure. **Existing Building Analysis**



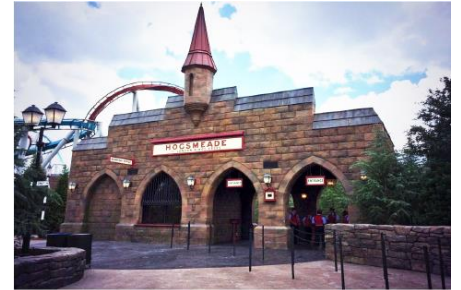
**Loma Linda University Medical Center** - Provided stair portion of the vertical circulation package for the new addition. **Steel Fabrication Support, Construction Engineering**



**Buddy Holly Stairs** - Developed custom connections and custom erection aids needed to safely fabricate and install the stair. **Construction Engineering**



**White Plains Hospital** - Provided a mechanical enclosure on the rooftop that incorporates modular construction and supports davits, chillers, and other equipment. **Structural Design, Existing Building Analysis**



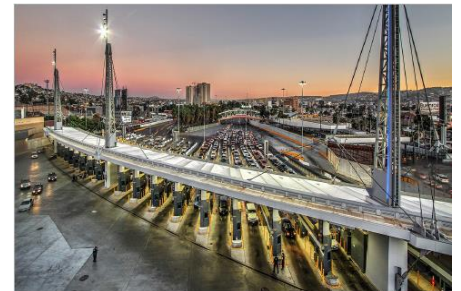
**Harry Potter Gates** - Provided a structural engineering assessment of two custom folding panel gates at Universal Studios Hollywood. **Existing Building Analysis**



**Fairmont Austin** - Developed structural steel connections and vertical bracing. **Steel Fabrication Support, Construction Engineering**



**Johnson Portables** - Provided the structural validation analysis for a 4,992 sq ft. temporary building unit built for Spring Valley Hospital. **Temporary Building Analysis**



**San Ysidro Port of Entry** - Developed the erection and cable stressing procedures to minimize risk and ensured proper construction. **Rigging and Erection, Construction Engineering**

“Our group appreciates all the time and effort spent to help both of our offices become the professional leaders in our industry. These details confirm, once again, that Innova Technologies is not satisfied with being good, but always strives to be the best. That’s the philosophy our office lives by, and it’s a real pleasure to be aligned with a company that emulates that professionalism.”

*Bob Eckmann, President and CEO, Advanced Seismic and Acoustic Solutions*